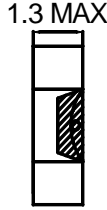
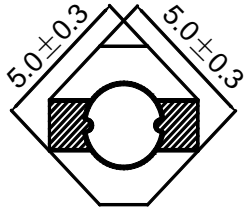


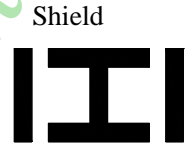
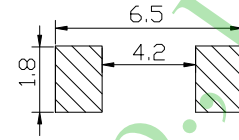
**Inductance Range:** 1.0μH~220μH  
**Temperature Range:** -40℃~+125℃

### PDRA5013-Series

#### DIMENSIONS(mm)



LAND PATTERNS(mm) CONSTRUCTION



#### FEATURES:

- ★Quantity / Reel: 4000pcs
- ★Small products, Octagonal 5.0mm, Height 1.1mm Type.
- ★The use of carrier tape package for SMT reflow soldering process
- ★Widely use in DC-DC converter/LCD TV/Notebook/ PDA/MP3 & MP4 player/Digital camera/DVD etc.
- ★Design to customer requirement

RoHS Compliant(SGS Certified Result)				
Pb	Cd	Cr+6	PBBs	PBDEs
<1000ppm	ND	ND	ND	ND

#### Electrical Characteristics:

Part Number	Test Condition	Inductance (μH)	Tolerance (%)	D.C.R(mΩ) Max.	Rated Current(A)
PDRA5013-1R0N	100KHz/0.3V	1.0	±30	44	1.62
PDRA5013-1R2M	100KHz/0.3V	1.2	±20	45	1.61
PDRA5013-2R0M	100KHz/0.3V	2.0	±20	62	1.30
PDRA5013-2R2M	100KHz/0.3V	2.2	±20	67	1.23
PDRA5013-3R5M	100KHz/0.3V	3.5	±20	96	0.93
PDRA5013-4R7M	100KHz/0.3V	4.7	±20	120	0.78
PDRA5013-5R6M	100KHz/0.3V	5.6	±20	140	0.74
PDRA5013-6R8M	100KHz/0.3V	6.8	±20	170	0.62
PDRA5013-8R2M	100KHz/0.3V	8.2	±20	230	0.60
PDRA5013-100M	1KHz/0.3V	10	±20	238	0.56
PDRA5013-150M	1KHz/0.3V	15	±20	402	0.42
PDRA5013-220M	1KHz/0.3V	22	±20	550	0.38
PDRA5013-330M	1KHz/0.3V	33	±20	780	0.31
PDRA5013-470M	1KHz/0.3V	47	±20	1140	0.27
PDRA5013-680M	1KHz/0.3V	68	±20	1530	0.20
PDRA5013-101M	1KHz/0.3V	100	±20	2130	0.16
PDRA5013-121M	1KHz/0.3V	120	±20	2370	0.15
PDRA5013-151M	1KHz/0.3V	150	±20	3390	0.13
PDRA5013-181M	1KHz/0.3V	180	±20	4120	0.12
PDRA5013-221M	1KHz/0.3V	220	±20	4510	0.11

- 1、 Inductance is measured with a LCR meter:HP4284A & 3532-50 or equivalent.
- 2、 D.C .R is measured with a Digital Multimeter TH2512B or equivalent.
- 3、 Rated Current: The rated current is the current at which the inductance decreases by 25% from the initial value or the temperature rise is ΔT=40℃ ,whichever is smaller(Ta=20℃).